



# Evolution in Locks

Product Lines

## Quality & History

Since 1965 we have contributed to the hardware industry with our knowledge, expertise & underlying goal of constant development that guarantees quality & recognition of our products; which have been approved by American & International standards.





# INDEX

Page 1-7  
**RIM PANIC**

Page 8  
**EMERGENCY EXIT PAD  
CLOSING SELECTOR FOR DOUBLE DOORS**

Page 9-10  
**EXTERNAL HANDLE ACCESSES**

Page 11  
**DOOR LOCKS  
DOOR CLOSERS**

Page 12  
**THREE POINTS LOCK  
TWO POINT FLUSH BOLT**

Page 13  
**FLUSHBOLT  
SMART LOCKS**

Page 14  
**GLASS DOOR LOCK  
ELECTRIC STRIKES**

Page 15  
**ACCESSORIES**





PANIC EXIT DEVICE

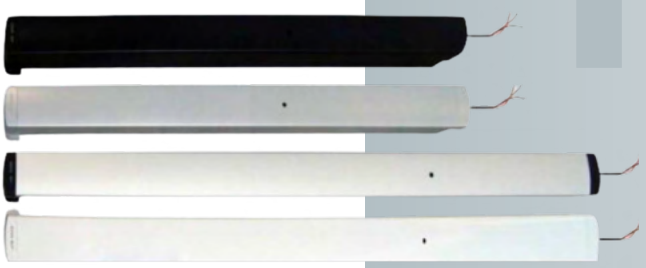


# T352



- ▶ Approved with 200,000 opening cycles
- ▶ Modular & reversible
- ▶ For single & double doors
- ▶ Suitable for metal, wood & aluminum doors
- ▶ Suitable for heavy traffic doors
- ▶ Active push bar & back bar made of extruded aluminum, end back bar & caps made of injection aluminum
- ▶ Option bar finish with High performance epoxy or anodized
- ▶ Not height door limitation
- ▶ Not thickness door limitation
- ▶ Not Equipped with dogging / undogging function
- ▶ Three options length devices for 36", 42" & 48" standard doors. Maximum cutting device 3"
- ▶ Projection: 3" when fully projected, 2" when its activated

# T352D



- ▶ Approved with 200,000 opening cycles
- ▶ Modular & reversible
- ▶ For single & double doors
- ▶ Suitable for metal, wood & aluminum doors
- ▶ Suitable for heavy traffic doors
- ▶ Active push bar & back bar made of extruded aluminum, end back bar & caps made of injection aluminum
- ▶ Option bar finish with High performance epoxy or anodized
- ▶ Not height door limitation
- ▶ Not thickness door limitation
- ▶ Not Equipped with dogging / undogging function
- ▶ Three options length devices for 36", 42" & 48" standard doors. Maximum cutting device 3"
- ▶ Projection: 3" when fully projected, 2" when its activated
- ▶ Microswitch included with 3 contacts (C, NO, NC) up to 5A



ITEM	DESCRIPTION
T352	Concealed Vertical Rod Panic Device
T352D	Dummy Concealed Vertical Rod Panic Device



RIM PANIC EXIT DEVICE

T341-04



- ▶ Rim Panic
- ▶ UL 10C, 3 hours Fire Rated. ANSI Grade 1
- ▶ UL 305 Shipped with dogging/undogging system
- ▶ For single doors
- ▶ Suitable for metal, wood and aluminum doors
- ▶ Steel painted or Stainless Steel
- ▶ Optional outside trim
- ▶ Total nominal length of the device:  
Standard Length 36" (910 mm) 42" (1066 mm)  
Minimum length: 24.5" (622 mm)
- ▶ Non-handed for left hand or right hand doors
- ▶ Accessories: fixing screws, end cover & striker
- ▶ Max weight door: 440 lbs (200kgs)



▶ Stainless Steel Material



Item	Description
T341-04	Panic Exit Device - Gray
T341-04S	Panic Exit Device - Stainless Steel

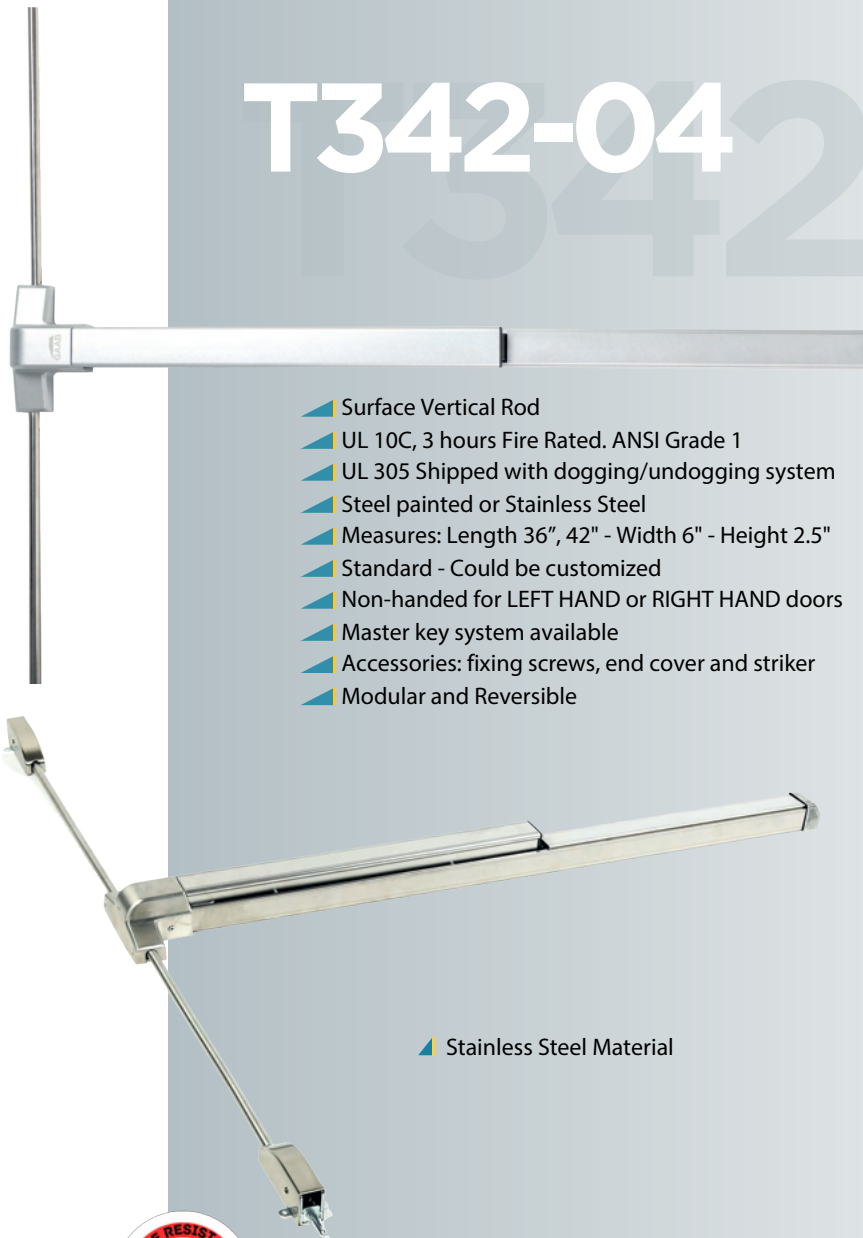
# PANIC EXIT DEVICE SURFACE VERTICAL ROD



## PANIC EXIT DEVICE SURFACE VERTICAL ROD

# T342-04

**ANSI**



- ▶ Surface Vertical Rod
- ▶ UL 10C, 3 hours Fire Rated. ANSI Grade 1
- ▶ UL 305 Shipped with dogging/undogging system
- ▶ Steel painted or Stainless Steel
- ▶ Measures: Length 36", 42" - Width 6" - Height 2.5"
- ▶ Standard - Could be customized
- ▶ Non-handed for LEFT HAND or RIGHT HAND doors
- ▶ Master key system available
- ▶ Accessories: fixing screws, end cover and striker
- ▶ Modular and Reversible

▶ Stainless Steel Material



**Item**

**Description**

T342-04

Panic Exit Device Surface Vertical - Gray

T342-04S

Panic Exit Device Surface Vertical Rod - Stainless Steel



RIM PANIC EXIT DEVICE

# T341-05



- ▶ Rim Panic
- ▶ UL 10C, 3 hours Fire Rated. ANSI Grade 1
- ▶ UL 305 Shipped with dogging/undogging system
- ▶ For single doors
- ▶ Suitable for metal, wood and aluminum doors
- ▶ Steel painted or Stainless Steel
- ▶ Optional outside trim
- ▶ Total nominal length of the device:  
Standard Length 36" (910 mm) 42" (1066 mm)  
Minimum length: 24.5" (622 mm)
- ▶ Non-handed for left hand or right hand doors
- ▶ Accessories: fixing screws, end cover & striker
- ▶ Max weight door: 440 lbs (200kgs)

# T342-05

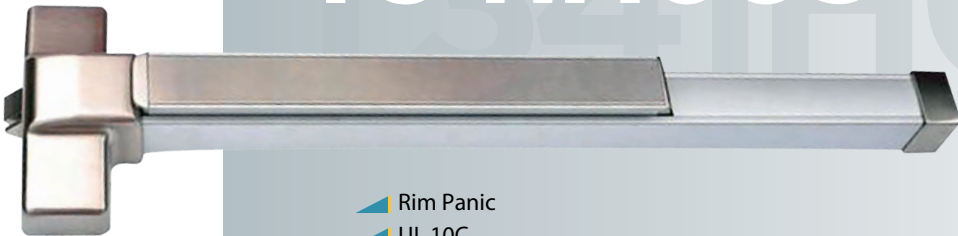


Item	Description
T341-05	Panic Exit Device - Gray
T342-05	Panic Exit Device - Gray



RIM PANIC EXIT DEVICE

# T341H06S



- ▶ Rim Panic
- ▶ UL 10C
- ▶ Reversible
- ▶ For single and double doors
- ▶ 3 Hours Fire Rated
- ▶ Applies to wooden, aluminum and metal doors
- ▶ Applies to high traffic doors
- ▶ Profile and mobile base in folded steel
- ▶ High performance and durability paint
- ▶ Optional exit handle
- ▶ Nominal length of the device  
33" length

# T342H06S



Item	Description
T341H06S	Stainless Steel
T342H06S	Stainless Steel



RIM PANIC EXIT DEVICE



# T391



- ▶ 1 point latching
- ▶ UL listed (UL 305)
- ▶ Modular & Reversible
- ▶ For single or double doors
- ▶ Suitable for metal, wood & aluminum doors
- ▶ Suitable for heavy traffic doors
- ▶ Strike (roller type)
- ▶ Extruded aluminum - made rail case and touch bar
- ▶ High performance epoxy paint finish with high strength and durability
- ▶ Optional outside trim
- ▶ Equipped with dogging / undogging function
- ▶ Total nominal length of the device:
  - Standard length: 33" (850mm)
  - Minimum length: 16" (400mm)
- ▶ Suitable for doors up to 8' (2440mm) height - 4' (1220 mm) width
- ▶ Max weight 440 lbs (200kgs)
- ▶ Dogging Function



Item	Description
T391-04	Rim Panic Exit Device - Gray
T391-01	Rim Panic Exit Device - Black





## TWO POINT SURFACE VERTICAL ROD

# T392



- ▶ 2 point latching
- ▶ UL listed (UL 305)
- ▶ Modular & Reversible
- ▶ For single or double doors
- ▶ Suitable for metal, wood and aluminum doors
- ▶ Suitable for heavy traffic doors
- ▶ Suitable for parallel frames
- ▶ Strike (roller type)
- ▶ Front & Back casing made out of Zamak
- ▶ Extruded aluminum - made rail case and touch bar
- ▶ High performance epoxy paint finish with high strength & durability
- ▶ Optional outside trim
- ▶ Equipped with dogging / undogging function
- ▶ Total nominal length of the device:
- ▶ Standard length: 33" (850mm) Minimum length: 16" (400mm)
- ▶ Suitable for doors up to 8' (2440mm) height 4'(1220mm) width
- ▶ Max weight 440 lbs (200kgs)
- ▶ Dogging Function



Item	Description
T392-04	Surface Vertical Rod Exit Device

## THREE-POINT SURFACE VERTICAL ROD

# T393



- ▶ 3 point latching
- ▶ UL listed (UL 305)
- ▶ Modular & Reversible
- ▶ For single or double doors
- ▶ Suitable for metal, wood & aluminum doors
- ▶ Suitable for heavy traffic doors
- ▶ Suitable for parallel frames
- ▶ Strike (roller type)
- ▶ Zamak - made front and back covers
- ▶ Extruded aluminum - made rail case and touch bar
- ▶ High performance epoxy paint finish with high strength & durability
- ▶ Optional outside trim
- ▶ Equipped with dogging / undogging function
- ▶ Total nominal length of the device:
- ▶ Standard length: 33" (850mm) Minimum length: 16" (400mm)
- ▶ Suitable for doors up to 8' (2440mm) height 4'(1220mm) width
- ▶ Max weight 440 lbs (200kgs)
- ▶ Dogging Function

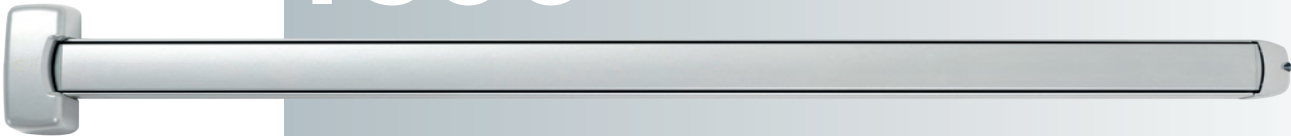


Item	Description
T393-04	Three - Point Latching Exit Device



RIM PANIC EXIT DEVICE

T300



- ▶ Approved with 200,000 opening cycles
- ▶ Modular & Reversible
- ▶ For single & double doors
- ▶ Suitable for metal, wood, aluminum & glass doors (kit for glass sold separately)
- ▶ Suitable for heavy traffic doors
- ▶ Zamak - made front and back covers
- ▶ Extruded aluminum - made rail case and touch bar
- ▶ High performance epoxy paint finish with high strength and durability
- ▶ Not height door limitations
- ▶ Not thickness door limitations
- ▶ Not Equipped with dogging / undogging function
- ▶ Total nominal length of the device: (Maximum cutting device 3 1/2")
  - Standard length: 33 5/32" (842mm)
  - Minimum length: up to 25 1/2" (650mm) Special order size
  - Maximum length: up to 47 1/4" (1200mm) Special order size
- ▶ Projection: 2 1/2" when fully projected, 1 45/64" when its activated



- ▶ Approved with 200,000 opening cycles
- ▶ Modular & Reversible
- ▶ For single & double doors
- ▶ Suitable for metal, wood, aluminum & glass doors (kit for glass sold separately)
- ▶ Suitable for heavy traffic doors
- ▶ Zamak - made front and back covers
- ▶ Extruded aluminum - made rail case and touch bar
- ▶ High performance epoxy paint finish with high strength and durability
- ▶ Not height door limitations
- ▶ Not thickness door limitations
- ▶ Not Equipped with dogging / undogging function
- ▶ Total nominal length of the device: (Maximum cutting device 3 1/2")
  - Standard length: 33 5/32" (842mm)
  - Minimum length: up to 25 1/2" (650mm) Special order size
  - Maximum length: up to 47 1/4" (1200mm) Special order size
- ▶ Projection: 2 1/2" when fully projected, 1 45/64" when its activated
- ▶ Single Microswitch included with contacts (C, NO, NC) up to 5A for use up to 24V



Item	Description
T300-04 T300D	Rim Panic Exit Device - Dummy Rim Panic Exit Device

# CROSSBAR EXIT DEVICES



## CROSSBAR EXIT DEVICE



# T290



- ▶ Approved under UNE EN-1125 standards (European)
- ▶ Approved with 200,000 opening cycles
- ▶ Modular & Reversible
- ▶ Quick & easy installation
- ▶ Suitable for metal, wood, aluminum & glass doors (kit sold separately)
- ▶ High performance epoxy paint finish with high strength & durability
- ▶ Optional outside trim
- ▶ Optional switch for electromagnetic latch opening
- ▶ Crossbar tube: standard diameter: 1" (25.4 mm)
- ▶ Optional length 39" (1000 mm) and 47" (1200 mm)



### Item

### Description

T290-04B	Push Lever Arms - Grey
T005-09	47" (1200mm) Crossbar Tube - Grey
T005-04	39" (1000mm) Crossbar Tube - Grey

## CROSSBAR EXIT DEVICE-FIRE RATED



# T295



- ▶ Approved under UNE EN-1125/1634 standards (European)
- ▶ Approved with 200,000 opening cycles
- ▶ Modular & Reversible
- ▶ Quick and easy installation
- ▶ Suitable for metal, wood, aluminum & glass doors (glass kit sold separately)
- ▶ High performance epoxy paint finish with high strength and durability
- ▶ Optional outside trim
- ▶ Crossbar tube: standard diameter: 1" (25.4 mm)
- ▶ Optional length 39" 1000 mm) and 47" (1200 mm)



### Item

### Description

T295-04	Push Lever Arms Fire Rated - Gray
T005-09	47" (1200mm) Crossbar Tube - Gray
T005-04	39" (1000mm) Crossbar Tube - Gray

# EMERGENCY TOUCH PAD & SELECTOR



## EMERGENCY TOUCH PAD



# T240



- ▶ Provides a quick, safe & effective exit
- ▶ Suitable for metal, wood, aluminum & glass doors (glass bed kit sold separately)
- ▶ Optional outside trim
- ▶ Quick and easy installation
- ▶ High performance epoxy paint finish with high strength and durability
- ▶ Nylon push pad
- ▶ Reversible

# T242



### Item

### Description

T240-04	Emergency Exit Touch Pad - Gray
T240-05	Emergency Exit Touch Pad - Black
T242-04	Emergency Exit Touch Pad - Black Red
T242-05	Emergency Exit Touch Pad - Gray Gray
T242-08	Emergency Exit Touch Pad - Black Black

## DOOR SEQUENCE SELECTOR FOR DOUBLE DOORS



# T210

- ▶ Suitable for double doors with or without top flap
- ▶ Suitable for metal, wood & aluminum doors with side flap
- ▶ Suitable for panic exit devices
- ▶ Selector arm & support made of cold rolled sheet 4mm thick
- ▶ Blue zinc plated finish
- ▶ Nylon wheels
- ▶ Its use with door closers is mandatory
- ▶ Mandatory use for fire doors according to International standard EN-1158
- ▶ Suitable for doors up to 8' (2440 mm) height 4' (1220 mm) width
- ▶ Maximum weight 220 Lbs. (100 kgs)
- ▶ Reversible



### Item

### Description

T210-03	Door Sequence Selector for Doors
---------	----------------------------------



TRUST IN GAAB FOR A SAFER EXIT!

gaablocks.com





## OUTSIDE LEVER



# T800M



- ▶ Suitable for metal, wood, aluminum & glass doors
- ▶ Quick & easy installation
- ▶ Suitable for T240, T391, T392, T393, T395, T290, T295 & T300 Panic Bar Series.
- ▶ High performance epoxy paint finish with high strength & durability
- ▶ Optional cylinder with ordinary or flat key
- ▶ Optional same combination key
- ▶ Optional passage style trim
- ▶ Standard key N° 71 for rekeying
- ▶ Recommended in doors with a thickness of 1.5" and 2.55"
- ▶ In case of glass doors, a specific support must be used (not included)



### Item

### Description

T800M14  
T800M11

Ordinary Key - Gray  
Classroom - Black Matte

## PASSAGE LEVER TRIM



# T850M



- ▶ Suitable for metal, wood, aluminum & glass doors
- ▶ Quick & easy installation
- ▶ Suitable for T240, T391, T392, T393, T395, T290, T295 & T300 Panic Bar Series.
- ▶ 4 High performance epoxy paint finish with high strength & durability
- ▶ Injected Nylon cover
- ▶ Recommended to be used in doors with a thickness of 1.5" & 2.55"
- ▶ In case of glass doors, a specific support must be used, (not included)



### Item

### Description

T850M04

Passage Lever Trim - Gray

## PULL HANDLE TRIM



# T870



- ▶ Suitable for metal, wood, aluminum & glass doors
- ▶ Quick & easy installation
- ▶ Suitable for T240, T391, T392, T393, T395, T290, T295 & T300 Panic Bar Series.
- ▶ Standard key N° 71 for rekeying
- ▶ Recommended to be used in doors with a thickness of 1.5" & 2.55"
- ▶ In case of glass doors, a specific support must be used, (not included)



### Item

### Description

T870-14

Pull Handle Trim - Gray



STANDARD DOOR CLOSER



R402

- ▶ UL 10C Certified 90 min
- ▶ Meet with AnSI 156.4 Grade 1
- ▶ 2 million opening cycles
- ▶ ADA: 5016 with barrier free (BF) function for elderly / handicapped
- ▶ Multi size, adjustable spring force from 1 to 6
- ▶ Rack & pinion mechanism contained in a high tensile precision, cast aluminum housing needle bearing
- ▶ Applicable to door weight between 15 to 150 KG
- ▶ Optional delay action & slim full plastic cover
- ▶ Universal application (Non-handed for standard, top jamb, or parallel arm installation)
- ▶ Included Components:
  - Bracket
  - Standard arm
  - Plastic inclined cover



Item	Description
R402-00	Standard Door Closer - Fire Rated
R402-01	Standard Door Closer - Dark Bronze Anodized

HEAVY DUTY DOOR CLOSER



R403

- ▶ Heavy duty door closer, for commercial doors
- ▶ UL Certificated 10C 90min fire resistance
- ▶ AnSI GRADE1, 2 million cycles in endurance
- ▶ Precise cast iron body & forged steel arm, hold open arm optional
- ▶ Adjustable closing & latching speed
- ▶ Adjustable back-check, delay action optional - precision heavy duty rack (Piston) & pinion gear, needle bearing
- ▶ Decorative plastic cover included
- ▶ Stainless - steel cover optional
- ▶ ADA approve, barrier Free, lower opening resistance for the handicapped / elderly



Item	Description
R403-00	Heavy Duty Door Closer - Fire Rated Gray
R403-01	Heavy Duty Door Closer - Fire Rated Dark Bronze Anodized
R403-02	Heavy Duty Door Closer - Fire Rated Black Matte

# THREE POINT LOCK FLUSHBOLT



## THREE POINT LOCK



# T503

- ▶ The bolt length provides maximum security for a single - leaf door
- ▶ Suitable for sliding narrow style aluminum, steel & wood (for 1 point latch only) doors in commercial, industrial & institutional buildings
- ▶ A solid hook bolt resists the sliding or revolving doors opening
- ▶ The blocking system, located in the center of the lock, provides high security against forcing attempts
- ▶ Utilizes a laminated steel short bolt, activated by a pivot mechanism to security
- ▶ 360° turn key or thumb turn projects or retracts the counterbalanced bolt. Key can be removed only when bolt is locked or unlocked position
- ▶ Lock supports any standard 1" (25.4 mm) length 1-5/32" (29.4 mm) diameter mortise cylinder. Lock supports cylinder from either or both sides
- ▶ Backset: 1-1/8" (28.6 mm), 1 1/4" (31.7mm) & 1-1/2" (38.1 mm)
- ▶ Up and bottom fixing holes are mortised and made by carbon steel sheet
- ▶ Up and bottom fixing bolts are made by laminated steel, the diameter is 9/16" & a maximum projection of 5/8" easily manual adjustable
- ▶ Suitable for doors up to 96" height mounted at 40" centerline above floor. For higher doors an extension or threaded rod up to 20" is required (Available separately)
- ▶ One or three locking points depending on the place to be fitted

## FLUSHBOLT



# T511

- ▶ Manual lock for hinged doors & sliding doors
- ▶ Suitable for single & double door
- ▶ Easy access
- ▶ Can be fitted on the edge or on the front or the door
- ▶ Suitable for aluminum & metal doors
- ▶ Rod extension compatible



### Item

### Description

T511-04	Flushbolt - Gray
T511-05	Flushbolt - Black Matte
T511-06	Flushbolt - White
T511-12	Flushbolt - Dark Bronze

## FLUSHBOLT TWO POINT

# T512



- ▶ This system is normally used in inactive sheets of double doors.
- ▶ It is operated by simply turning the knob ¼ turn clockwise.
- ▶ It is equipped with two 14mm thick locking bolts, they are project 19mm towards the frame and adjustable, quiet part of the building, and nylon seals included to prevent water ingress.
- ▶ Drive knob finishes in Grey, White, Black Matte, and Dark Bronze.
- ▶ It suitable for doors up to 2440mm, and there is a additional extension up to 3048mm in total.
- ▶ Suitable for minimum door thicknesses of 44mm with profiles uprights with a minimum width of 63mm. with wall thicknesses from 2.5mm to 3.2mm and with a maximum distance from the 38mm door edge.





SMART LOCK

# R750



- ▶ Suitable for wood, aluminum or metal doors
- ▶ Suitable for doors from 13.8" to 21.7" (350 to 550mm) of width
- ▶ Measures 9.213" x 2.52" x 0.709" (234 x 64 x 18mm)
- ▶ Functions: Fingerprint, digital pad & encrypted key
- ▶ Bluetooth commanded by the TLock App (QR)
- ▶ Emergency access under frontal panel key
- ▶ Password or 6 - 2 digits
- ▶ 5v emergency power supply with micro usb
- ▶ Card reading distance 0.2" - 0.8" (5 - 20mm)
- ▶ Fingerprint recognition time: Less than 0.5 sec.
- ▶ Card type: IC ml
- ▶ 4.8V Low battery indicator
- ▶ Emergency dynamic consumption: about 150mA
- ▶ Supply voltage: 6V
- ▶ Power supply: 4 pcs AAA batteries
- ▶ Applicable temperature<sup>o</sup>-33.8°F to 140°F



MORTISE LOCK



Item	Description
R750-04	Smart Lock



TEMPERED GLASS DOOR LOCK

# T180



- ▶ Injected aluminum - made front & back case
- ▶ Easy installation, no cutting glass required
- ▶ Non-handed
- ▶ High performance epoxy paint finish with high strength & durability
- ▶ Suitable for tempered glass door 3/8" and 1/2" (10 mm & 12 mm thickness)
- ▶ Fully adjustable



BLACK



GRAY



WHITE



RED



PINK



YELLOW



GREEN



BLUE



Artículo

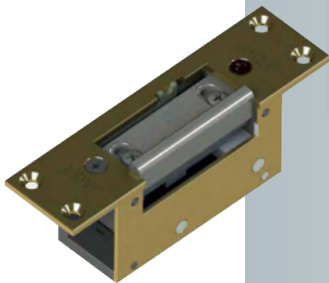
Descripción

T180-00	Tempered Glass Door Lock - Standard Gray
T180-04	Tempered Glass Door Lock - Black
T180-05	Tempered Glass Door Lock - Yellow
T180-06	Tempered Glass Door Lock - Red
T180-07	Tempered Glass Door Lock - Pink
T180-08	Tempered Glass Door Lock - Blue
T180-09	Tempered Glass Door Lock - White
T180-11	Tempered Glass Door Lock - Green



ELECTRIC STRIKE DOOR - STANDARD

# T705



- ▶ Zamak-made body, lever and latch-bolt
- ▶ 3/32" (2.5mm) thickness steel front
- ▶ AC 12V input voltage / 850 mA
- ▶ Permanent Unlock Option
- ▶ Equipped wire output for electrical installation
- ▶ Reversible



Item	Description
T705-00	Electric Strike Door
T707-00	Electric Strike Door With Permanent Unlock Option

DOOR SEQUENCE SELECTOR FOR DOUBLE DOORS

# T730



- ▶ Body, stop, latch and levers made of zamak under pressure
- ▶ 3/32" (2.5mm) thick steel front
- ▶ Input voltage of 12Vac 850mA
- ▶ Injected nylon finish
- ▶ Suitable for push and touch line devices
- ▶ Reversible



Item	Description
T730-01	Electric Strike Door For Panic Exit Devices - Gray



LATCH CASES

# T291



LATCH CASES

T291-04B

T291-05

- ▶ Approved under UNE EN-1125 standards (European)
- ▶ Suitable for single & double doors
- ▶ Suitable for T300 series & T290 series
- ▶ Suitable for doors up to 8' (2440 mm) height - 4' (1220 mm) width
- ▶ Max weight 440 lbs (200 kgs)
- ▶ Suitable for steel, wood, aluminum & glass doors
- ▶ High performance epoxy paint finish with high strength and durability
- ▶ Mounting kit for glass sold separately

## R352



## R503



## S511-03



## S511-05



## S511-04



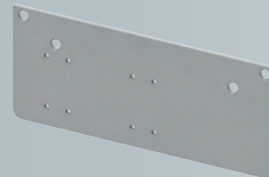
## I402HOA-00 I403HOA-00



## DPL402-00



## DPL403-00



## I354





# Evolution in Locks

## Commitment

We have a strong commitment to the public, to continue providing outstanding quality panic devices at competitive rates. Offering versatile engineering & unique products.

